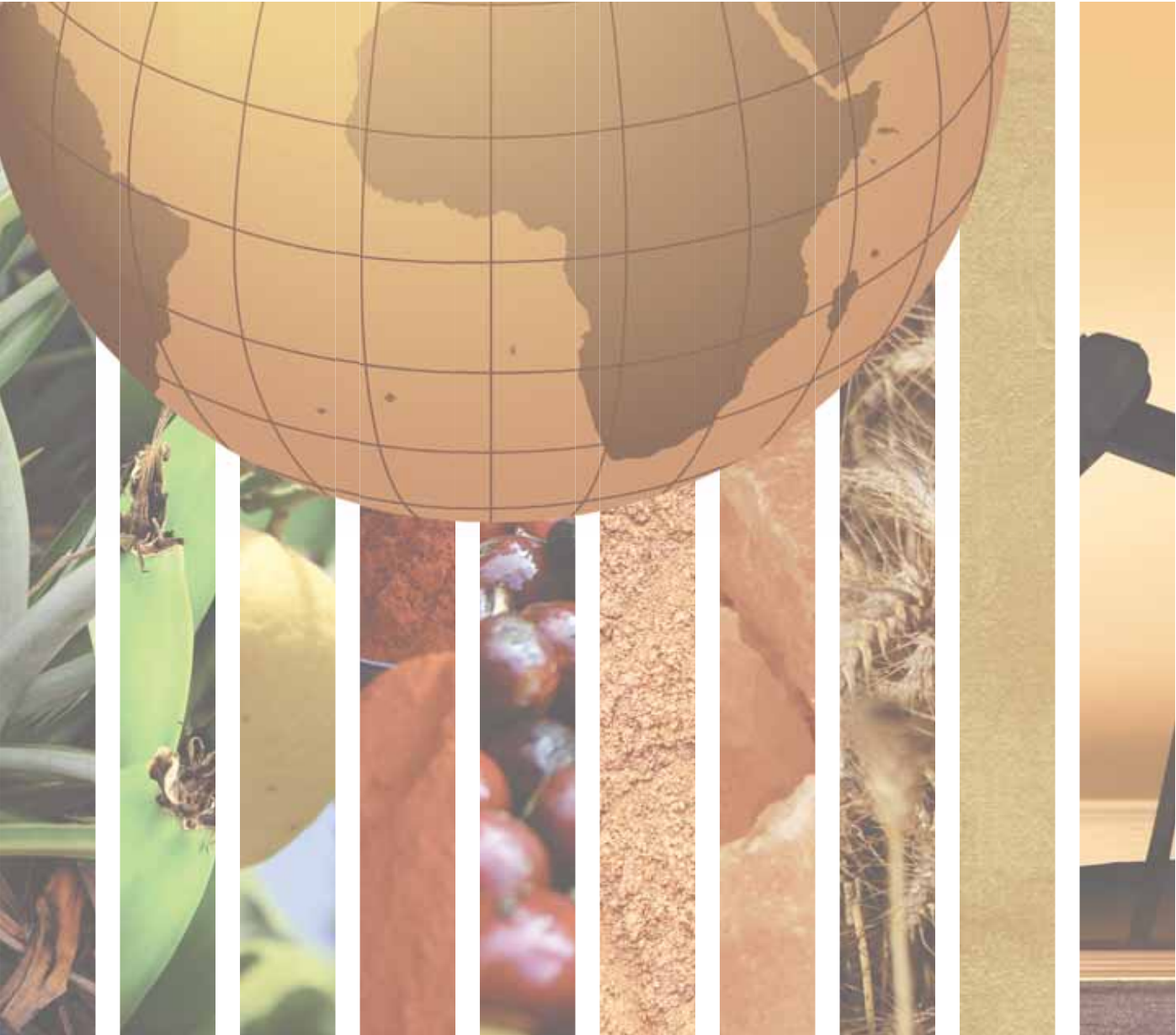


# OCEANIA





AMERICAN SAMOA		COOK ISLANDS	
GENERAL INFORMATION		GENERAL INFORMATION	
Total area (square kilometres), 2009	200	Total area (square kilometres), 2009	240
Agricultural area (as a percentage of total area), 2009	25	Agricultural area (as a percentage of total area), 2009	13
Population (1,000 inhabitants), 2010	68	Population (1,000 inhabitants), 2010	20
Labour force (1,000 workers), 2010	28	Labour force (1,000 workers), 2010	8
Women in labour force (as a percentage of total labour force), 2010	39	Women in labour force (as a percentage of total labour force), 2010	38
Labour force in agriculture (as a percentage of total labour force), 2010	29	Labour force in agriculture (as a percentage of total labour force), 2010	25
Women in agriculture (as a percentage of labour force in agriculture), 2010	38	Women in agriculture (as a percentage of labour force in agriculture), 2010	50
Gross Domestic Product (GDP) (in millions of US\$), 2010	n.a.	Gross Domestic Product (GDP) (in millions of US\$), 2009	193
GDP by economic activity (as a percentage of GDP), 2009 (agriculture / industry / services)	n.a.	GDP by economic activity (as a percentage of GDP), 2009 (agriculture / industry / services)	9/10/82
COMMODITY EXPORT DEPENDENCE		COMMODITY EXPORT DEPENDENCE	
Commodity exports (in millions of US\$ and as a percentage of merchandise exports), 2009-2010	223 (47%)	Commodity exports (in millions of US\$ and as a percentage of merchandise exports), 2009-2010	2.8 (74%)
Commodity exports (as a percentage of GDP), 2009-2010	n.a.	Commodity exports (as a percentage of GDP), 2008-2009	1
Exports by commodity groups (as a percentage of total commodity exports), 2009-2010		Exports by commodity groups (as a percentage of total commodity exports), 2009-2010	
All food items	59	All food items	88
Agricultural raw materials	12	Agricultural raw materials	1
Fuels	1	Fuels	–
Ores, metals, precious stones and non-monetary gold	28	Ores, metals, precious stones and non-monetary gold	11
Three leading commodity exports (as a percentage of commodity exports), 2009-2010	82	Three leading commodity exports (as a percentage of commodity exports), 2009-2010	97
(081) Feeding stuff for animals (no unmilled cereals)	35	(03) Fishery products	75
(263) Cotton	10	(059) Fruit and vegetable juices, unfermented, no spirit	11
(03) Fishery products	10	(667) Pearls, precious & semi-precious stones	10
Leading destination markets for commodity exports (as a percentage of commodity exports), 2009-2010	87	Leading destination markets for commodity exports (as a percentage of commodity exports), 2009-2010	94
Australia, Bahrain, New Zealand, Indonesia, Thailand	40/18/12/11/6	Japan, United States, EU (27), Indonesia, New Zealand	69/7/6/6/6
Export concentration ratio	(2000) 0.2014 (2010) 0.2775	Export concentration ratio	(2000) 0.9044 (2010) 0.4751
Membership in international commodity bodies	–	Membership in international commodity bodies	–
FOOD SECURITY		FOOD SECURITY	
Commodity import value (in millions of US\$ and as a percentage of merchandise import value), 2009-2010	335 (59%)	Commodity import value (in millions of US\$ and as a percentage of merchandise import value), 2009-2010	96 (40%)
Net food imports (in millions of US\$), 2010	102	Net food imports (in millions of US\$), 2010	86
MDG 1.1: Percentage of population below 1US\$ (PPP) per day, 1990/92 and 2007/09	n.a.	MDG 1.1: Percentage of population below 1US\$ (PPP) per day, 1990/92 and 2007/09	n.a.
MDG 1.9: Percentage of the population undernourished, 1991 and 2007	n.a.	MDG 1.9: Percentage of the population undernourished, 1991 and 2007	n.a.



FIJI		FRENCH POLYNESIA	
<b>GENERAL INFORMATION</b>		<b>GENERAL INFORMATION</b>	
Total area (square kilometres), 2009	18,270	Total area (square kilometres), 2009	4,000
Agricultural area (as a percentage of total area), 2009	23	Agricultural area (as a percentage of total area), 2009	11
Population (1,000 inhabitants), 2010	861	Population (1,000 inhabitants), 2010	271
Labour force (1,000 workers), 2010	351	Labour force (1,000 workers), 2010	121
Women in labour force (as a percentage of total labour force), 2010	33	Women in labour force (as a percentage of total labour force), 2010	39
Labour force in agriculture (as a percentage of total labour force), 2010	36	Labour force in agriculture (as a percentage of total labour force), 2010	27
Women in agriculture (as a percentage of labour force in agriculture), 2010	21	Women in agriculture (as a percentage of labour force in agriculture), 2010	36
Gross Domestic Product (GDP) (in millions of US\$), 2010	3,086	Gross Domestic Product (GDP) (in millions of US\$), 2009	4,535
GDP by economic activity (as a percentage of GDP), 2009 (agriculture / industry / services)	13/20/67	GDP by economic activity (as a percentage of GDP), 2009 (agriculture / industry / services)	3/13/85
<b>COMMODITY EXPORT DEPENDENCE</b>		<b>COMMODITY EXPORT DEPENDENCE</b>	
Commodity exports (in millions of US\$ and as a percentage of merchandise exports), 2009-2010	464 (77%)	Commodity exports (in millions of US\$ and as a percentage of merchandise exports), 2009-2010	127 (76%)
Commodity exports (as a percentage of GDP), 2009-2010	15	Commodity exports (as a percentage of GDP), 2008-2009	3
Exports by commodity groups (as a percentage of total commodity exports), 2009-2010		Exports by commodity groups (as a percentage of total commodity exports), 2009-2010	
All food items	78	All food items	18
Agricultural raw materials	7	Agricultural raw materials	2
Fuels	9	Fuels	–
Ores, metals, precious stones and non-monetary gold	6	Ores, metals, precious stones and non-monetary gold	80
Three leading commodity exports (as a percentage of commodity exports), 2009-2010	59	Three leading commodity exports (as a percentage of commodity exports), 2009-2010	90
(061) Sugar, molasses and honey	25	(667) Pearls, precious & semi-precious stones	79
(03) Fishery products	22	(058) Fruit, preserved, and fruit preparations (no juice)	6
(111) Non-alcoholic beverages, n.e.s.	12	(03) Fishery products	5
Leading destination markets for commodity exports (as a percentage of commodity exports), 2009-2010	68	Leading destination markets for commodity exports (as a percentage of commodity exports), 2009-2010	95
United States, EU (27), Australia, Japan, Tonga	24/22/9/8/5	Japan, United States, China Hong Kong SAR, EU (27), China	46/19/17/12/1
Export concentration ratio	(2000) 0.2448 (2010) 0.2254	Export concentration ratio	(2000) 0.7630 (2010) 0.6423
Membership in international commodity bodies	ISO, ITTO	Membership in international commodity bodies	–
<b>FOOD SECURITY</b>		<b>FOOD SECURITY</b>	
Commodity import value (in millions of US\$ and as a percentage of merchandise import value), 2009-2010	658 (49%)	Commodity import value (in millions of US\$ and as a percentage of merchandise import value), 2009-2010	648 (38%)
Net food imports (in millions of US\$), 2010	- 104	Net food imports (in millions of US\$), 2010	381
MDG 1.1: Percentage of population below 1US\$ (PPP) per day, 1990/92 and 2007/09	n.a.	MDG 1.1: Percentage of population below 1US\$ (PPP) per day, 1990/92 and 2007/09	n.a.
MDG 1.9: Percentage of the population undernourished, 1991 and 2007	8 - 5	MDG 1.9: Percentage of the population undernourished, 1991 and 2007	10 - 5



GUAM		KIRIBATI	
GENERAL INFORMATION		GENERAL INFORMATION	
Total area (square kilometres), 2009	540	Total area (square kilometres), 2009	810
Agricultural area (as a percentage of total area), 2009	35	Agricultural area (as a percentage of total area), 2009	42
Population (1,000 inhabitants), 2010	180	Population (1,000 inhabitants), 2010	100
Labour force (1,000 workers), 2010	88	Labour force (1,000 workers), 2010	48
Women in labour force (as a percentage of total labour force), 2010	41	Women in labour force (as a percentage of total labour force), 2010	44
Labour force in agriculture (as a percentage of total labour force), 2010	23	Labour force in agriculture (as a percentage of total labour force), 2010	23
Women in agriculture (as a percentage of labour force in agriculture), 2010	25	Women in agriculture (as a percentage of labour force in agriculture), 2010	27
Gross Domestic Product (GDP) (in millions of US\$), 2010	n.a.	Gross Domestic Product (GDP) (in millions of US\$), 2010	155
GDP by economic activity (as a percentage of GDP), 2009 (agriculture / industry / services)	n.a.	GDP by economic activity (as a percentage of GDP), 2009 (agriculture / industry / services)	27/10/63
COMMODITY EXPORT DEPENDENCE		COMMODITY EXPORT DEPENDENCE	
Commodity exports (in millions of US\$ and as a percentage of merchandise exports), 2009-2010	8 (28%)	Commodity exports (in millions of US\$ and as a percentage of merchandise exports), 2009-2010	14 (85%)
Commodity exports (as a percentage of GDP), 2009-2010	n.a.	Commodity exports (as a percentage of GDP), 2009-2010	10
Exports by commodity groups (as a percentage of total commodity exports), 2009-2010		Exports by commodity groups (as a percentage of total commodity exports), 2009-2010	
All food items	75	All food items	98
Agricultural raw materials	1	Agricultural raw materials	–
Fuels	2	Fuels	1
Ores, metals, precious stones and non-monetary gold	21	Ores, metals, precious stones and non-monetary gold	1
Three leading commodity exports (as a percentage of commodity exports), 2009-2010	91	Three leading commodity exports (as a percentage of commodity exports), 2009-2010	98
(03) Fishery products	65	(03) Fishery products	94
(282) Ferrous waste, scrape; remelting ingots, iron, steel	17	(422) Fixed vegetable fats & oils, crude, refined, fract.	3
(071) Coffee and coffee substitutes	9	(334) Petroleum oils or bituminous minerals > 70 % oil	1
Leading destination markets for commodity exports (as a percentage of commodity exports), 2009-2010	97	Leading destination markets for commodity exports (as a percentage of commodity exports), 2009-2010	93
Japan, Taiwan Province of China, EU (27), Republic of Korea, Thailand	59/19/10/7/2	Thailand, Ecuador, Japan, China Hong Kong SAR, United States	33/32/22/3/3
Export concentration ratio	(2000) 0.5125 (2010) 0.8252	Export concentration ratio	(2000) 0.5851 (2010) 0.7261
Membership in international commodity bodies	–	Membership in international commodity bodies	–
FOOD SECURITY		FOOD SECURITY	
Commodity import value (in millions of US\$ and as a percentage of merchandise import value), 2009-2010	415 (63%)	Commodity import value (in millions of US\$ and as a percentage of merchandise import value), 2009-2010	32 (49%)
Net food imports (in millions of US\$), 2010	51	Net food imports (in millions of US\$), 2010	5
MDG 1.1: Percentage of population below 1US\$ (PPP) per day, 1990/92 and 2007/09	n.a.	MDG 1.1: Percentage of population below 1US\$ (PPP) per day, 1990/92 and 2007/09	n.a.
MDG 1.9: Percentage of the population undernourished, 1991 and 2007	n.a.	MDG 1.9: Percentage of the population undernourished, 1991 and 2007	8 - 5



MARSHALL ISLANDS		MICRONESIA (FEDERATED STATES OF)	
<b>GENERAL INFORMATION</b>		<b>GENERAL INFORMATION</b>	
Total area (square kilometres), 2009	180	Total area (square kilometres), 2009	700
Agricultural area (as a percentage of total area), 2009	72	Agricultural area (as a percentage of total area), 2009	31
Population (1,000 inhabitants), 2010	54	Population (1,000 inhabitants), 2010	111
Labour force (1,000 workers), 2010	n.a.	Labour force (1,000 workers), 2010	54
Women in labour force (as a percentage of total labour force), 2010	n.a.	Women in labour force (as a percentage of total labour force), 2010	41
Labour force in agriculture (as a percentage of total labour force), 2010	n.a.	Labour force in agriculture (as a percentage of total labour force), 2010	22
Women in agriculture (as a percentage of labour force in agriculture), 2010	29	Women in agriculture (as a percentage of labour force in agriculture), 2010	25
Gross Domestic Product (GDP) (in millions of US\$), 2009	171	Gross Domestic Product (GDP) (in millions of US\$), 2009	270
GDP by economic activity (as a percentage of GDP), 2009 (agriculture / industry / services)	10/19/70	GDP by economic activity (as a percentage of GDP), 2009 (agriculture / industry / services)	19/4/77
<b>COMMODITY EXPORT DEPENDENCE</b>		<b>COMMODITY EXPORT DEPENDENCE</b>	
Commodity exports (in millions of US\$ and as a percentage of merchandise exports), 2009-2010	5 (25%)	Commodity exports (in millions of US\$ and as a percentage of merchandise exports), 2009-2010	26 (97%)
Commodity exports (as a percentage of GDP), 2008-2009	2	Commodity exports (as a percentage of GDP), 2008-2009	10
Exports by commodity groups (as a percentage of total commodity exports), 2009-2010		Exports by commodity groups (as a percentage of total commodity exports), 2009-2010	
All food items	68	All food items	100
Agricultural raw materials	–	Agricultural raw materials	–
Fuels	31	Fuels	–
Ores, metals, precious stones and non-monetary gold	1	Ores, metals, precious stones and non-monetary gold	–
Three leading commodity exports (as a percentage of commodity exports), 2009-2010	99	Three leading commodity exports (as a percentage of commodity exports), 2009-2010	99
(03) Fishery products	65	(03) Fishery products	99
(334) Petroleum oils or bituminous minerals > 70 % oil	31		
(422) Fixed vegetable fats & oils, crude, refined, fract.	3		
Leading destination markets for commodity exports (as a percentage of commodity exports), 2009-2010	78	Leading destination markets for commodity exports (as a percentage of commodity exports), 2009-2010	99
Thailand, Singapore, United States, Japan, EU (27)	29/15/13/12/9	Thailand, Japan, United States, China	61/17/13/8
Export concentration ratio	(2000) 0.5218 (2010) 0.7048	Export concentration ratio	(2000) 0.7155 (2010) 0.9324
Membership in international commodity bodies	–	Membership in international commodity bodies	–
<b>FOOD SECURITY</b>		<b>FOOD SECURITY</b>	
Commodity import value (in millions of US\$ and as a percentage of merchandise import value), 2009-2010	2 (2%)	Commodity import value (in millions of US\$ and as a percentage of merchandise import value), 2009-2010	54 (38%)
Net food imports (in millions of US\$), 2010	- 5	Net food imports (in millions of US\$), 2010	31
MDG 1.1: Percentage of population below 1US\$ (PPP) per day, 1990/92 and 2007/09	n.a.	MDG 1.1: Percentage of population below 1US\$ (PPP) per day, 1990/92 and 2007/09	n.a. - 31
MDG 1.9: Percentage of the population undernourished, 1991 and 2007	n.a.	MDG 1.9: Percentage of the population undernourished, 1991 and 2007	n.a.



NAURU		NEW CALEDONIA	
GENERAL INFORMATION		GENERAL INFORMATION	
Total area (square kilometres), 2009	20	Total area (square kilometres), 2009	18,580
Agricultural area (as a percentage of total area), 2009	20	Agricultural area (as a percentage of total area), 2009	14
Population (1,000 inhabitants), 2010	10	Population (1,000 inhabitants), 2010	251
Labour force (1,000 workers), 2010	5	Labour force (1,000 workers), 2010	107
Women in labour force (as a percentage of total labour force), 2010	40	Women in labour force (as a percentage of total labour force), 2010	38
Labour force in agriculture (as a percentage of total labour force), 2010	20	Labour force in agriculture (as a percentage of total labour force), 2010	30
Women in agriculture (as a percentage of labour force in agriculture), 2010	–	Women in agriculture (as a percentage of labour force in agriculture), 2010	41
Gross Domestic Product (GDP) (in millions of US\$), 2009	54	Gross Domestic Product (GDP) (in millions of US\$), 2009	9,283
GDP by economic activity (as a percentage of GDP), 2009 (agriculture / industry / services)	4/52/44	GDP by economic activity (as a percentage of GDP), 2009 (agriculture / industry / services)	2/29/69
COMMODITY EXPORT DEPENDENCE		COMMODITY EXPORT DEPENDENCE	
Commodity exports (in millions of US\$ and as a percentage of merchandise exports), 2009-2010	20 (73%)	Commodity exports (in millions of US\$ and as a percentage of merchandise exports), 2009-2010	444 (39%)
Commodity exports (as a percentage of GDP), 2008-2009	n.r.	Commodity exports (as a percentage of GDP), 2008-2009	5
Exports by commodity groups (as a percentage of total commodity exports), 2009-2010		Exports by commodity groups (as a percentage of total commodity exports), 2009-2010	
All food items	2	All food items	5
Agricultural raw materials	1	Agricultural raw materials	–
Fuels	9	Fuels	2
Ores, metals, precious stones and non-monetary gold	88	Ores, metals, precious stones and non-monetary gold	93
Three leading commodity exports (as a percentage of commodity exports), 2009-2010	98	Three leading commodity exports (as a percentage of commodity exports), 2009-2010	95
(272) Crude fertilizers (excluding those of division 56)	88	(284) Nickel ores & concentrates; nickel mattes, etc.	83
(335) Residual petroleum products, n.e.s., related mater.	9	(281) Iron ore and concentrates	8
(03) Fishery products	1	(03) Fishery products	4
Leading destination markets for commodity exports (as a percentage of commodity exports), 2009-2010	96	Leading destination markets for commodity exports (as a percentage of commodity exports), 2009-2010	97
New Zealand, India, Australia, EU (27), Republic of Korea	34/30/13/11/8	EU (27), Republic of Korea, Australia, Japan	42/23/17/15
Export concentration ratio	(2000) 0.7587 (2010) 0.5244	Export concentration ratio	(2000) 0.6412 (2010) 0.6215
Membership in international commodity bodies	–	Membership in international commodity bodies	–
FOOD SECURITY		FOOD SECURITY	
Commodity import value (in millions of US\$ and as a percentage of merchandise import value), 2009-2010	65 (69%)	Commodity import value (in millions of US\$ and as a percentage of merchandise import value), 2009-2010	839 (32%)
Net food imports (in millions of US\$), 2010	35	Net food imports (in millions of US\$), 2010	339
MDG 1.1: Percentage of population below 1US\$ (PPP) per day, 1990/92 and 2007/09	n.a.	MDG 1.1: Percentage of population below 1US\$ (PPP) per day, 1990/92 and 2007/09	n.a.
MDG 1.9: Percentage of the population undernourished, 1991 and 2007	n.a.	MDG 1.9: Percentage of the population undernourished, 1991 and 2007	8 - 8



NIUE		NORTHERN MARIANA ISLANDS	
GENERAL INFORMATION		GENERAL INFORMATION	
Total area (square kilometres), 2009	260	Total area (square kilometres), 2009	460
Agricultural area (as a percentage of total area), 2009	19	Agricultural area (as a percentage of total area), 2009	7
Population (1,000 inhabitants), 2010	1	Population (1,000 inhabitants), 2010	61
Labour force (1,000 workers), 2010	1	Labour force (1,000 workers), 2010	30
Women in labour force (as a percentage of total labour force), 2010	–	Women in labour force (as a percentage of total labour force), 2010	43
Labour force in agriculture (as a percentage of total labour force), 2010	–	Labour force in agriculture (as a percentage of total labour force), 2010	23
Women in agriculture (as a percentage of labour force in agriculture), 2010	–	Women in agriculture (as a percentage of labour force in agriculture), 2010	29
Gross Domestic Product (GDP) (in millions of US\$), 2010	n.a.	Gross Domestic Product (GDP) (in millions of US\$), 2010	n.a.
GDP by economic activity (as a percentage of GDP), 2009 (agriculture / industry / services)	n.a.	GDP by economic activity (as a percentage of GDP), 2009 (agriculture / industry / services)	n.a.
COMMODITY EXPORT DEPENDENCE		COMMODITY EXPORT DEPENDENCE	
Commodity exports (in millions of US\$ and as a percentage of merchandise exports), 2009-2010	0.0005 (2%)	Commodity exports (in millions of US\$ and as a percentage of merchandise exports), 2009-2010	3 (46%)
Commodity exports (as a percentage of GDP), 2009-2010	n.a.	Commodity exports (as a percentage of GDP), 2009-2010	n.a.
Exports by commodity groups (as a percentage of total commodity exports), 2009-2010		Exports by commodity groups (as a percentage of total commodity exports), 2009-2010	
All food items	41	All food items	22
Agricultural raw materials	14	Agricultural raw materials	2
Fuels	17	Fuels	–
Ores, metals, precious stones and non-monetary gold	28	Ores, metals, precious stones and non-monetary gold	76
Three leading commodity exports (as a percentage of commodity exports), 2009-2010	55	Three leading commodity exports (as a percentage of commodity exports), 2009-2010	97
(684) Aluminium	27	(287) Ores and concentrates of base metals, n.e.s.	74
(334) Petroleum oils or bituminous minerals > 70 % oil	17	(03) Fishery products	20
(269) Worn clothing and other worn textile articles	11	(282) Ferrous waste, scrape; remelting ingots, iron, steel	3
Leading destination markets for commodity exports (as a percentage of commodity exports), 2009-2010	98	Leading destination markets for commodity exports (as a percentage of commodity exports), 2009-2010	97
EU (27), Nigeria, New Zealand, India, Peru	46/40/9/2/1	EU (27), Japan, Taiwan Province of China	75/19/3
Export concentration ratio	(2000) 0.3577 (2010) 0.5037	Export concentration ratio	(2000) 0.3678 (2010) 0.5512
Membership in international commodity bodies	–	Membership in international commodity bodies	–
FOOD SECURITY		FOOD SECURITY	
Commodity import value (in millions of US\$ and as a percentage of merchandise import value), 2009-2010	3 (61%)	Commodity import value (in millions of US\$ and as a percentage of merchandise import value), 2009-2010	40 (50%)
Net food imports (in millions of US\$), 2010	3	Net food imports (in millions of US\$), 2010	11
MDG 1.1: Percentage of population below 1US\$ (PPP) per day, 1990/92 and 2007/09	n.a.	MDG 1.1: Percentage of population below 1US\$ (PPP) per day, 1990/92 and 2007/09	n.a.
MDG 1.9: Percentage of the population undernourished, 1991 and 2007	n.a.	MDG 1.9: Percentage of the population undernourished, 1991 and 2007	n.a.



PALAU		PAPUA NEW GUINEA	
GENERAL INFORMATION		GENERAL INFORMATION	
Total area (square kilometres), 2009	460	Total area (square kilometres), 2009	462,840
Agricultural area (as a percentage of total area), 2009	11	Agricultural area (as a percentage of total area), 2009	2
Population (1,000 inhabitants), 2010	20	Population (1,000 inhabitants), 2010	6,858
Labour force (1,000 workers), 2010	10	Labour force (1,000 workers), 2010	3,040
Women in labour force (as a percentage of total labour force), 2010	40	Women in labour force (as a percentage of total labour force), 2010	49
Labour force in agriculture (as a percentage of total labour force), 2010	20	Labour force in agriculture (as a percentage of total labour force), 2010	69
Women in agriculture (as a percentage of labour force in agriculture), 2010	50	Women in agriculture (as a percentage of labour force in agriculture), 2010	56
Gross Domestic Product (GDP) (in millions of US\$), 2009	204	Gross Domestic Product (GDP) (in millions of US\$), 2010	9,319
GDP by economic activity (as a percentage of GDP), 2009 (agriculture / industry / services)	3/21/77	GDP by economic activity (as a percentage of GDP), 2009 (agriculture / industry / services)	34/42/23
COMMODITY EXPORT DEPENDENCE		COMMODITY EXPORT DEPENDENCE	
Commodity exports (in millions of US\$ and as a percentage of merchandise exports), 2009-2010	11 (94%)	Commodity exports (in millions of US\$ and as a percentage of merchandise exports), 2009-2010	5,254 (98%)
Commodity exports (as a percentage of GDP), 2008-2009	6	Commodity exports (as a percentage of GDP), 2009-2010	61
Exports by commodity groups (as a percentage of total commodity exports), 2009-2010		Exports by commodity groups (as a percentage of total commodity exports), 2009-2010	
All food items	98	All food items	19
Agricultural raw materials	–	Agricultural raw materials	8
Fuels	–	Fuels	19
Ores, metals, precious stones and non-monetary gold	2	Ores, metals, precious stones and non-monetary gold	54
Three leading commodity exports (as a percentage of commodity exports), 2009-2010	99	Three leading commodity exports (as a percentage of commodity exports), 2009-2010	67
(03) Fishery products	97	(971) Gold, non-monetary (excluding gold ores and concentrates)	29
(282) Ferrous waste, scrape; remelting ingots, iron, steel	1	(283) Copper ores and concentrates; copper mattes, cemen	22
(112) Alcoholic beverages	1	(333) Petroleum oils, oils from bitumin. materials, crude	16
Leading destination markets for commodity exports (as a percentage of commodity exports), 2009-2010	99	Leading destination markets for commodity exports (as a percentage of commodity exports), 2009-2010	86
Japan, Taiwan Province of China	98/1	Australia, EU (27), Japan, China, Philippines	44/14/14/10/4
Export concentration ratio	(2000) 0.5646 (2010) 0.9096	Export concentration ratio	(2000) 0.3497 (2010) 0.3674
Membership in international commodity bodies	–	Membership in international commodity bodies	ICCO, ICO, ITTO
FOOD SECURITY		FOOD SECURITY	
Commodity import value (in millions of US\$ and as a percentage of merchandise import value), 2009-2010	56 (55%)	Commodity import value (in millions of US\$ and as a percentage of merchandise import value), 2009-2010	1,507 (46%)
Net food imports (in millions of US\$), 2010	30	Net food imports (in millions of US\$), 2010	- 242
MDG 1.1: Percentage of population below 1US\$ (PPP) per day, 1990/92 and 2007/09	n.a.	MDG 1.1: Percentage of population below 1US\$ (PPP) per day, 1990/92 and 2007/09	36 - n.a.
MDG 1.9: Percentage of the population undernourished, 1991 and 2007	n.a.	MDG 1.9: Percentage of the population undernourished, 1991 and 2007	n.a.





SAMOA		SOLOMON ISLANDS	
GENERAL INFORMATION		GENERAL INFORMATION	
Total area (square kilometres), 2009	2,840	Total area (square kilometres), 2009	28,900
Agricultural area (as a percentage of total area), 2009	24	Agricultural area (as a percentage of total area), 2009	3
Population (1,000 inhabitants), 2010	183	Population (1,000 inhabitants), 2010	538
Labour force (1,000 workers), 2010	66	Labour force (1,000 workers), 2010	223
Women in labour force (as a percentage of total labour force), 2010	33	Women in labour force (as a percentage of total labour force), 2010	39
Labour force in agriculture (as a percentage of total labour force), 2010	27	Labour force in agriculture (as a percentage of total labour force), 2010	68
Women in agriculture (as a percentage of labour force in agriculture), 2010	33	Women in agriculture (as a percentage of labour force in agriculture), 2010	46
Gross Domestic Product (GDP) (in millions of US\$), 2010	561	Gross Domestic Product (GDP) (in millions of US\$), 2010	768
GDP by economic activity (as a percentage of GDP), 2009 (agriculture / industry / services)	12/26/62	GDP by economic activity (as a percentage of GDP), 2009 (agriculture / industry / services)	36/8/57
COMMODITY EXPORT DEPENDENCE		COMMODITY EXPORT DEPENDENCE	
Commodity exports (in millions of US\$ and as a percentage of merchandise exports), 2009-2010	12 (23%)	Commodity exports (in millions of US\$ and as a percentage of merchandise exports), 2009-2010	186 (99%)
Commodity exports (as a percentage of GDP), 2009-2010	2	Commodity exports (as a percentage of GDP), 2009-2010	25
Exports by commodity groups (as a percentage of total commodity exports), 2009-2010		Exports by commodity groups (as a percentage of total commodity exports), 2009-2010	
All food items	97	All food items	23
Agricultural raw materials	2	Agricultural raw materials	76
Fuels	–	Fuels	–
Ores, metals, precious stones and non-monetary gold	1	Ores, metals, precious stones and non-monetary gold	1
Three leading commodity exports (as a percentage of commodity exports), 2009-2010	77	Three leading commodity exports (as a percentage of commodity exports), 2009-2010	92
(03) Fishery products	55	(24+25) Forestry products	75
(422) Fixed vegetable fats & oils, crude, refined, fract.	15	(03) Fishery products	11
(112) Alcoholic beverages	7	(422) Fixed vegetable fats & oils, crude, refined, fract.	6
Leading destination markets for commodity exports (as a percentage of commodity exports), 2009-2010	96	Leading destination markets for commodity exports (as a percentage of commodity exports), 2009-2010	85
New Zealand, American Samoa, United States, Singapore, Australia	49/24/11/7/5	China, EU (27), Republic of Korea, Thailand, Japan	63/10/5/4/3
Export concentration ratio	(2000) 0.6280 (2010) 0.7439	Export concentration ratio	(2000) 0.5817 (2010) 0.7295
Membership in international commodity bodies	–	Membership in international commodity bodies	–
FOOD SECURITY		FOOD SECURITY	
Commodity import value (in millions of US\$ and as a percentage of merchandise import value), 2009-2010	120 (47%)	Commodity import value (in millions of US\$ and as a percentage of merchandise import value), 2009-2010	152 (48%)
Net food imports (in millions of US\$), 2010	61	Net food imports (in millions of US\$), 2010	39
MDG 1.1: Percentage of population below 1US\$ (PPP) per day, 1990/92 and 2007/09	n.a.	MDG 1.1: Percentage of population below 1US\$ (PPP) per day, 1990/92 and 2007/09	n.a.
MDG 1.9: Percentage of the population undernourished, 1991 and 2007	9 - 5	MDG 1.9: Percentage of the population undernourished, 1991 and 2007	21 - 11



TOKELAU		TONGA	
<b>GENERAL INFORMATION</b>		<b>GENERAL INFORMATION</b>	
Total area (square kilometres), 2009	10	Total area (square kilometres), 2009	750
Agricultural area (as a percentage of total area), 2009	60	Agricultural area (as a percentage of total area), 2009	41
Population (1,000 inhabitants), 2010	1	Population (1,000 inhabitants), 2010	104
Labour force (1,000 workers), 2010	n.a.	Labour force (1,000 workers), 2010	41
Women in labour force (as a percentage of total labour force), 2010	n.a.	Women in labour force (as a percentage of total labour force), 2010	44
Labour force in agriculture (as a percentage of total labour force), 2010	n.a.	Labour force in agriculture (as a percentage of total labour force), 2010	27
Women in agriculture (as a percentage of labour force in agriculture), 2010	n.a.	Women in agriculture (as a percentage of labour force in agriculture), 2010	45
Gross Domestic Product (GDP) (in millions of US\$), 2010	n.a.	Gross Domestic Product (GDP) (in millions of US\$), 2010	374
GDP by economic activity (as a percentage of GDP), 2009 (agriculture / industry / services)	n.a.	GDP by economic activity (as a percentage of GDP), 2009 (agriculture / industry / services)	19/18/63
<b>COMMODITY EXPORT DEPENDENCE</b>		<b>COMMODITY EXPORT DEPENDENCE</b>	
Commodity exports (in millions of US\$ and as a percentage of merchandise exports), 2009-2010	0.02 (26%)	Commodity exports (in millions of US\$ and as a percentage of merchandise exports), 2009-2010	6 (80%)
Commodity exports (as a percentage of GDP), 2009-2010	n.a.	Commodity exports (as a percentage of GDP), 2009-2010	2
Exports by commodity groups (as a percentage of total commodity exports), 2009-2010		Exports by commodity groups (as a percentage of total commodity exports), 2009-2010	
All food items	81	All food items	88
Agricultural raw materials	8	Agricultural raw materials	9
Fuels	–	Fuels	–
Ores, metals, precious stones and non-monetary gold	11	Ores, metals, precious stones and non-monetary gold	3
Three leading commodity exports (as a percentage of commodity exports), 2009-2010	66	Three leading commodity exports (as a percentage of commodity exports), 2009-2010	93
(042) Rice	41	(054) Vegetables	80
(059) Fruit and vegetable juices, unfermented, no spirit	18	(292) Crude vegetable materials, n.e.s.	9
(057) Fruits and nuts (excluding oil nuts), fresh or dried	7	(075) Spices	4
Leading destination markets for commodity exports (as a percentage of commodity exports), 2009-2010	96	Leading destination markets for commodity exports (as a percentage of commodity exports), 2009-2010	85
Nigeria, EU (27), United States, South Africa, Thailand	43/33/9/7/4	China Hong Kong SAR, United States, New Zealand, Japan, Republic of Korea	35/20/13/12/5
Export concentration ratio	(2000) 0.1127 (2010) 0.1290	Export concentration ratio	(2000) 0.5790 (2010) 0.6368
Membership in international commodity bodies	–	Membership in international commodity bodies	INBAR
<b>FOOD SECURITY</b>		<b>FOOD SECURITY</b>	
Commodity import value (in millions of US\$ and as a percentage of merchandise import value), 2009-2010	0.035 (51%)	Commodity import value (in millions of US\$ and as a percentage of merchandise import value), 2009-2010	72 (49%)
Net food imports (in millions of US\$), 2010	- 0.011	Net food imports (in millions of US\$), 2010	54
MDG 1.1: Percentage of population below 1US\$ (PPP) per day, 1990/92 and 2007/09	n.a.	MDG 1.1: Percentage of population below 1US\$ (PPP) per day, 1990/92 and 2007/09	n.a.
MDG 1.9: Percentage of the population undernourished, 1991 and 2007	n.a.	MDG 1.9: Percentage of the population undernourished, 1991 and 2007	n.a.



TUVALU		VANUATU	
<b>GENERAL INFORMATION</b>		<b>GENERAL INFORMATION</b>	
Total area (square kilometres), 2009	30	Total area (square kilometres), 2009	12,190
Agricultural area (as a percentage of total area), 2009	60	Agricultural area (as a percentage of total area), 2009	15
Population (1,000 inhabitants), 2010	10	Population (1,000 inhabitants), 2010	240
Labour force (1,000 workers), 2010	4	Labour force (1,000 workers), 2010	126
Women in labour force (as a percentage of total labour force), 2010	50	Women in labour force (as a percentage of total labour force), 2010	47
Labour force in agriculture (as a percentage of total labour force), 2010	25	Labour force in agriculture (as a percentage of total labour force), 2010	30
Women in agriculture (as a percentage of labour force in agriculture), 2010	–	Women in agriculture (as a percentage of labour force in agriculture), 2010	47
Gross Domestic Product (GDP) (in millions of US\$), 2010	32	Gross Domestic Product (GDP) (in millions of US\$), 2010	717
GDP by economic activity (as a percentage of GDP), 2009 (agriculture / industry / services)	17/13/70	GDP by economic activity (as a percentage of GDP), 2009 (agriculture / industry / services)	21/9/70
<b>COMMODITY EXPORT DEPENDENCE</b>		<b>COMMODITY EXPORT DEPENDENCE</b>	
Commodity exports (in millions of US\$ and as a percentage of merchandise exports), 2009-2010	0.1 (33%)	Commodity exports (in millions of US\$ and as a percentage of merchandise exports), 2009-2010	45 (85%)
Commodity exports (as a percentage of GDP), 2009-2010	0.3	Commodity exports (as a percentage of GDP), 2009-2010	7
Exports by commodity groups (as a percentage of total commodity exports), 2009-2010		Exports by commodity groups (as a percentage of total commodity exports), 2009-2010	
All food items	67	All food items	97
Agricultural raw materials	13	Agricultural raw materials	1
Fuels	5	Fuels	1
Ores, metals, precious stones and non-monetary gold	15	Ores, metals, precious stones and non-monetary gold	–
Three leading commodity exports (as a percentage of commodity exports), 2009-2010	80	Three leading commodity exports (as a percentage of commodity exports), 2009-2010	91
(03) Fishery products	59	(03) Fishery products	86
(684) Aluminium	13	(223) Oil seeds & oleaginous fruits (incl. flour, n.e.s.)	3
(24+25) Forestry products	8	(422) Fixed vegetable fats & oils, crude, refined, fract.	2
Leading destination markets for commodity exports (as a percentage of commodity exports), 2009-2010	93	Leading destination markets for commodity exports (as a percentage of commodity exports), 2009-2010	93
Japan, EU (27), Australia, United States, Fiji	59/14/7/7/6	Thailand, Japan, EU (27), New Caledonia, Papua New Guinea	67/20/3/2/1
Export concentration ratio	(2000) 0.1631 (2010) 0.3943	Export concentration ratio	(2000) 0.5065 (2010) 0.8075
Membership in international commodity bodies	–	Membership in international commodity bodies	ITTO
<b>FOOD SECURITY</b>		<b>FOOD SECURITY</b>	
Commodity import value (in millions of US\$ and as a percentage of merchandise import value), 2009-2010	3 (18%)	Commodity import value (in millions of US\$ and as a percentage of merchandise import value), 2009-2010	110 (38%)
Net food imports (in millions of US\$), 2010	2	Net food imports (in millions of US\$), 2010	13
MDG 1.1: Percentage of population below 1US\$ (PPP) per day, 1990/92 and 2007/09	n.a.	MDG 1.1: Percentage of population below 1US\$ (PPP) per day, 1990/92 and 2007/09	n.a.
MDG 1.9: Percentage of the population undernourished, 1991 and 2007	n.a.	MDG 1.9: Percentage of the population undernourished, 1991 and 2007	10 - 5


**WALLIS AND FUTUNA**
**GENERAL INFORMATION**

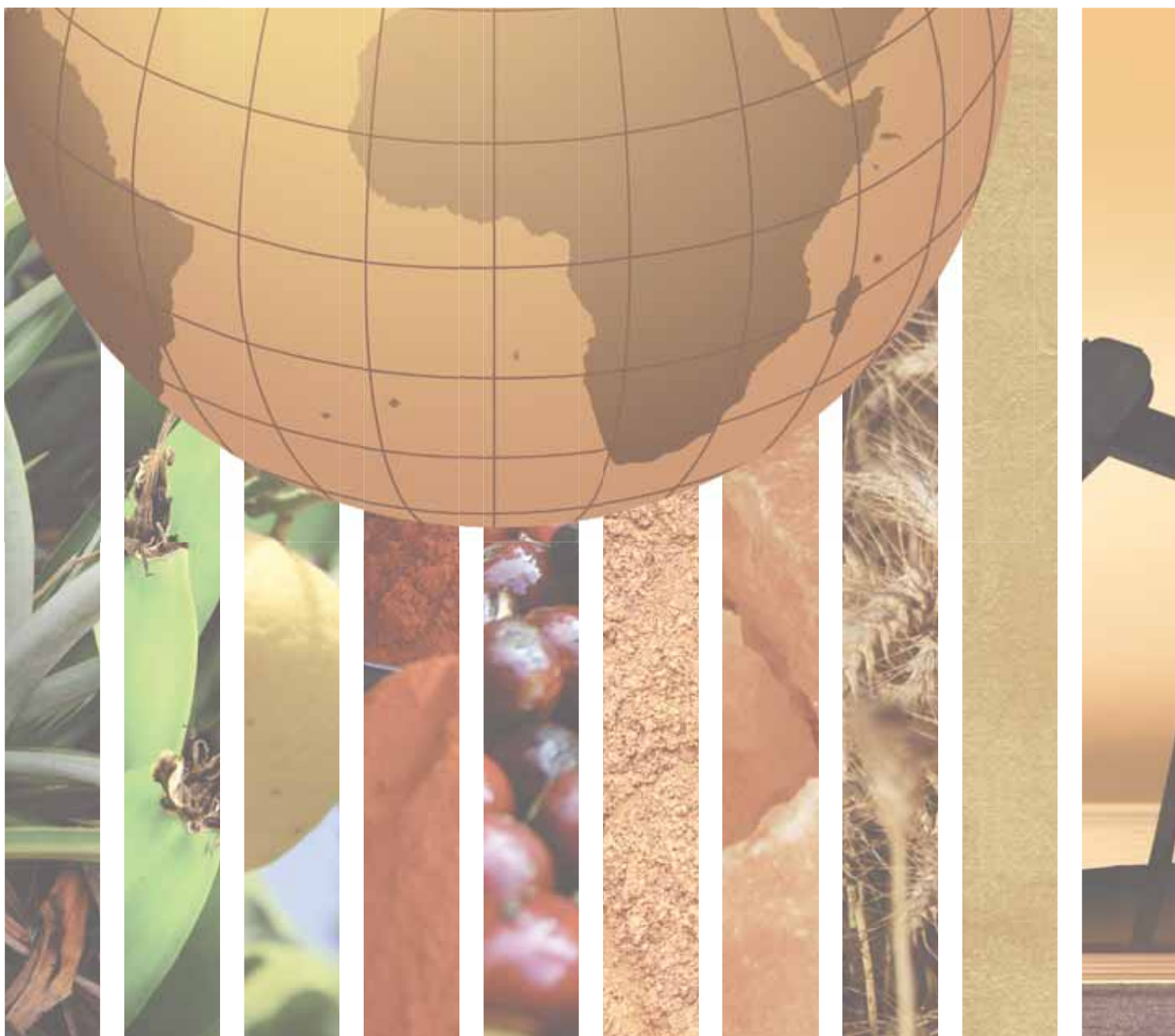
Total area (square kilometres), 2009	140
Agricultural area (as a percentage of total area), 2009	43
Population (1,000 inhabitants), 2010	14
Labour force (1,000 workers), 2010	6
Women in labour force (as a percentage of total labour force), 2010	33
Labour force in agriculture (as a percentage of total labour force), 2010	17
Women in agriculture (as a percentage of labour force in agriculture), 2010	100
Gross Domestic Product (GDP) (in millions of US\$), 2010	n.a.
GDP by economic activity (as a percentage of GDP), 2009 (agriculture / industry / services)	n.a.

**COMMODITY EXPORT DEPENDENCE**

Commodity exports (in millions of US\$ and as a percentage of merchandise exports), 2009-2010	0.001 (2%)
Commodity exports (as a percentage of GDP), 2009-2010	n.a.
Exports by commodity groups (as a percentage of total commodity exports), 2009-2010	
All food items	83
Agricultural raw materials	17
Fuels	–
Ores, metals, precious stones and non-monetary gold	–
Three leading commodity exports (as a percentage of commodity exports), 2009-2010	70
(071) Coffee and coffee substitutes	36
(072) Cocoa	25
(073) Chocolate, food preparations with cocoa, n.e.s.	9
Leading destination markets for commodity exports (as a percentage of commodity exports), 2009-2010	100
New Caledonia, United States, EU (27), Canada, Pakistan	55/25/11/7/2
Export concentration ratio	(2000) 0.3956 (2010) 0.4505
Membership in international commodity bodies	–

**FOOD SECURITY**

Commodity import value (in millions of US\$ and as a percentage of merchandise import value), 2009-2010	23 (41%)
Net food imports (in millions of US\$), 2010	19
MDG 1.1: Percentage of population below 1US\$ (PPP) per day, 1990/92 and 2007/09	n.a.
MDG 1.9: Percentage of the population undernourished, 1991 and 2007	n.a.



UNITED NATIONS